

**Manhattan Beach Middle School
Advanced Band Audition for 2008-2009**

Tuba

1. All scales **MUST** be memorized. Play all scales at specified tempo.
2. The allotment of points will be as follows (100 points total):
 - a. Clap and **Count** Rhythms: 5 points each
 - b. Chromatic Scale: 20 points
 - c. Major Scales: 10 points each (please name the scale and the key signature before playing each scale)
3. Scoring deductions: The following are mandatory deductions:
 - a. Restart (-1 point per restart)
 - b. Note mistakes (-1 point per occurrence): includes unclear notes / extra notes.
 - c. Wrong notes (-2 points) per note not played in the key signature
 - d. Uneven rhythm (-1 point per occurrence)
 - e. Speed a little slow (-2 points)
 - f. Speed very slow (-4 to -6 points)
 - g. Missed/Incorrect articulation i.e. tongue/slur (-1 per occurrence)

1. Clap and Count Rhythm ♩ = 120 (5 points)

Musical notation for Clap and Count Rhythm 1. It consists of two staves in 4/4 time. The first staff contains a sequence of eighth and quarter notes with rests. The second staff contains a sequence of eighth and quarter notes with rests, including a triplet of eighth notes.

2. Clap and Count Rhythm ♩ = 60 (5 points) or ♩ = 80 (6 points)

Musical notation for Clap and Count Rhythm 2. It consists of two staves in 4/4 time. The first staff contains a sequence of eighth and quarter notes with rests, including a triplet of eighth notes. The second staff contains a sequence of eighth and quarter notes with rests, including a triplet of eighth notes.

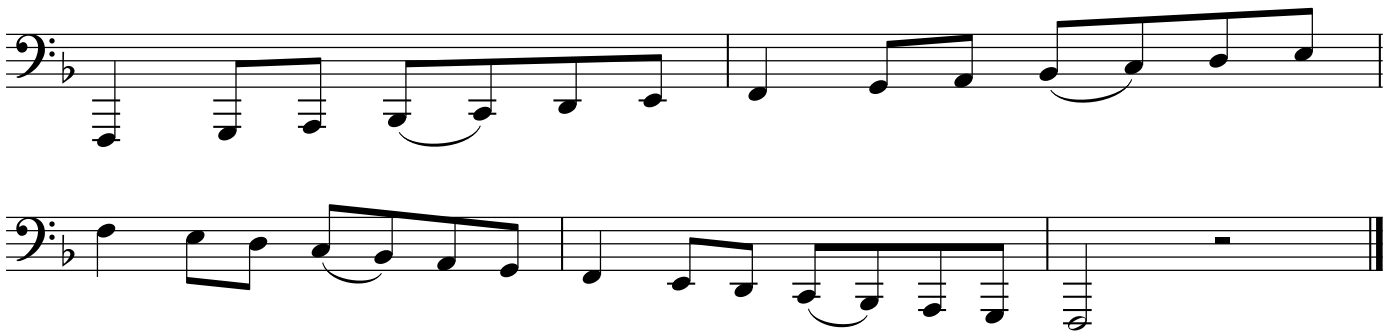
2 Octave Chromatic Scale ♩ = 72 (20 points)

Musical notation for 2 Octave Chromatic Scale. It consists of two staves in bass clef. The first staff shows an ascending chromatic scale with triplets of eighth notes. The second staff shows a descending chromatic scale with triplets of eighth notes.

Concert C Major Scale ♩ = 96 (10 points)



Concert F Major Scale ♩ = 96 (10 points)



Concert Bb Major Scale ♩ = 96 (10 points)



Concert Eb Major Scale ♩ = 96 (10 points)



Concert Ab Major Scale ♩ = 96 (10 points)



Concert G Major Scale ♩ = 96 (10 points)



Concert D Major Scale ♩ = 96 (10 points)

