


**Manhattan Beach Middle School
Advanced Band Audition for 2008-2009**

Tenor Saxophone

1. All scales **MUST** be memorized. Play all scales at specified tempo.
2. The allotment of points will be as follows (100 points total):
 - a. Clap and **Count** Rhythms: 5 points each
 - b. Chromatic Scale: 20 points
 - c. Major Scales: 10 points each (please name the scale and the key signature before playing each scale)
3. Scoring deductions: The following are mandatory deductions:
 - a. Restart (-1 point per restart)
 - b. Note mistakes (-1 point per occurrence): includes unclear notes / extra notes.
 - c. Wrong notes (-2 points) per note not played in the key signature
 - d. Uneven rhythm (-1 point per occurrence)
 - e. Speed a little slow (-2 points)
 - f. Speed very slow (-4 to -6 points)
 - g. Missed/Incorrect articulation i.e. tongue/slur (-1 per occurrence)
4. Please be informed that the tenor saxophone is a very popular instrument and that there is a limited number of tenor saxophones that the Advanced Band can accept.

1. Clap and Count Rhythm ♩ = 120 (5 points)



2. Clap and Count Rhythm ♩ = 60 (5 points) or ♩ = 80 (6 points)



Full Range Chromatic Scale ♩ = 120 (20 points)



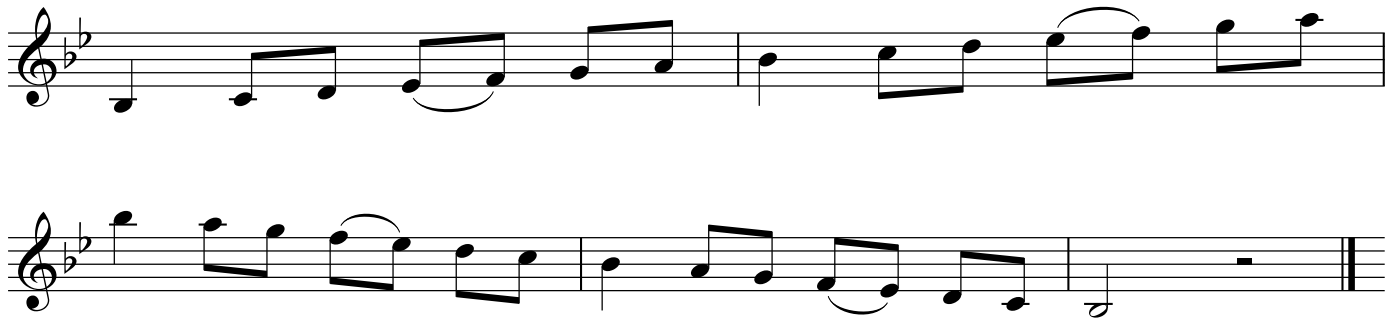
C Major Scale (Concert Bb) ♩ = 144 (10 points)



F Major Scale (Concert Eb) ♩ = 144 (10 points)



Bb Major Scale (Concert Ab) ♩ = 144 (10 points)



G Major Scale (Concert F) ♩ = 144 (10 points)



D Major Scale (Concert C) ♩ = 144 (10 points)

Two staves of musical notation for the D Major Scale (Concert C). The first staff shows the ascending scale: D4 (quarter), E4 (quarter), F#4 (quarter), G4 (quarter), A4 (quarter), B4 (quarter), C#5 (quarter), D5 (quarter). The second staff shows the descending scale: D5 (quarter), C#5 (quarter), B4 (quarter), A4 (quarter), G4 (quarter), F#4 (quarter), E4 (quarter), D4 (quarter). Both staves include slurs and ties to indicate phrasing.

A Major Scale (Concert G) ♩ = 144 (10 points)

One staff of musical notation for the A Major Scale (Concert G). The scale is written as: A4 (quarter), B4 (quarter), C#5 (quarter), D5 (quarter), E5 (quarter), F#5 (quarter), G5 (quarter), A5 (quarter). The notation includes slurs and ties.

E Major Scale (Concert D) ♩ = 144 (10 points)

Two staves of musical notation for the E Major Scale (Concert D). The first staff shows the ascending scale: E4 (quarter), F#4 (quarter), G#4 (quarter), A4 (quarter), B4 (quarter), C#5 (quarter), D5 (quarter), E5 (quarter). The second staff shows the descending scale: E5 (quarter), D5 (quarter), C#5 (quarter), B4 (quarter), A4 (quarter), G#4 (quarter), F#4 (quarter), E4 (quarter). Both staves include slurs and ties.