

**Manhattan Beach Middle School
Advanced Band Audition for 2008-2009**

Alto Saxophone

1. All scales **MUST** be memorized. Play all scales at specified tempo.
2. The allotment of points will be as follows (100 points total):
 - a. Clap and **Count** Rhythms: 5 points each
 - b. Chromatic Scale: 20 points
 - c. Major Scales: 10 points each (please name the scale and the key signature before playing each scale)
3. Scoring deductions: The following are mandatory deductions:
 - a. Restart (-1 point per restart)
 - b. Note mistakes (-1 point per occurrence): includes unclear notes / extra notes.
 - c. Wrong notes (-2 points) per note not played in the key signature
 - d. Uneven rhythm (-1 point per occurrence)
 - e. Speed a little slow (-2 points)
 - f. Speed very slow (-4 to -6 points)
 - g. Missed/Incorrect articulation i.e. tongue/slur (-1 per occurrence)
4. Please be informed that the alto saxophone is a very popular instrument and that there is a limited number of alto saxophones that the Advanced Band can accept.

1. Clap and Count Rhythm ♩ = 120 (5 points)

Musical notation for Clap and Count Rhythm 1. It consists of two staves of music in 4/4 time. The first staff contains a sequence of eighth and quarter notes with rests. The second staff contains a sequence of quarter notes, eighth notes, and quarter notes with rests.

2. Clap and Count Rhythm ♩ = 60 (5 points) or ♩ = 80 (6 points)

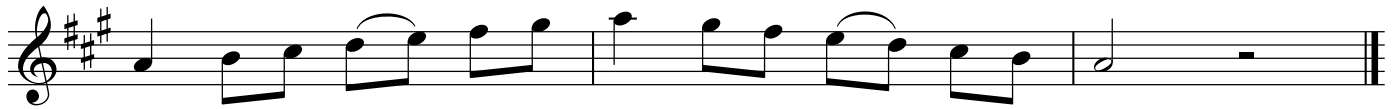
Musical notation for Clap and Count Rhythm 2. It consists of two staves of music in 4/4 time. The first staff contains a sequence of eighth and quarter notes with rests, including a triplet of eighth notes. The second staff contains a sequence of eighth and quarter notes with rests.

2 1/2 Octave Chromatic Scale ♩ = 120 (20 points)

Musical notation for 2 1/2 Octave Chromatic Scale. It consists of three staves of music in treble clef. The first staff shows the ascending scale with triplets of eighth notes. The second staff shows the descending scale with triplets of eighth notes. The third staff shows the final notes of the scale.

C Major Scale (Concert Eb) ♩ = 144 (10 points)**F Major Scale (Concert Eb) ♩ = 144 (10 points)****G Major Scale (Concert Bb) ♩ = 144 (10 points)****D Major Scale (Concert F) ♩ = 144 (10 points)**

A Major Scale (Concert C) ♩ = 144 (10 points)



E Major Scale (Concert G) ♩ = 144 (10 points)



B Major Scale (Concert D) ♩ = 144 (10 points)

